



Tel: 0861 111 717 | Email: info@proaluminium.co.za | Fax: 031 701 2030

KZN Office: 19 Suffert Street, Pinetown, KwaZulu Natal

Gauteng: 192 Flemming Road, Unit 19, Route, Meadowdale

CK 97/18306/23 VAT No: 467 016 5471 Showerink Aluminium CC t/a Pro Aluminium & Glass (PTY) Ltd Reg no: 2013/121408/07

Architectural Aluminium Excellence

Doors | Windows | Shopfronts | Enclosures | Facades | Louvres

SABS
150 9001



www.proaluminium.co.za

29 JULY 2022

RE: WESTWOOD ESTATE – LIVING ROOM REPLACEMENT SLIDING DOOR

Dear Sir/ Madam,

- Please note any alterations done to windows or doors must be approved and signed off by the Trustees and / or the Estate Manager acting for the Trustees.
- Removal and re-installation of an existing security door may be required, which is for the owners account.
- Any installation related damage to the building is to be repaired by the owner in accordance with the approved paint specifications.
- Each frame is custom made and will require proper measurement prior to fabrication. Pro Aluminium will arrange suitable appointments with the owners for the finals to be taken.
- Please note due to the difference in floor heights, the sliding track may protrude above the finish floor, creating a tripping hazard. A timber skirting may need to be added on to the inside of the finish floor.

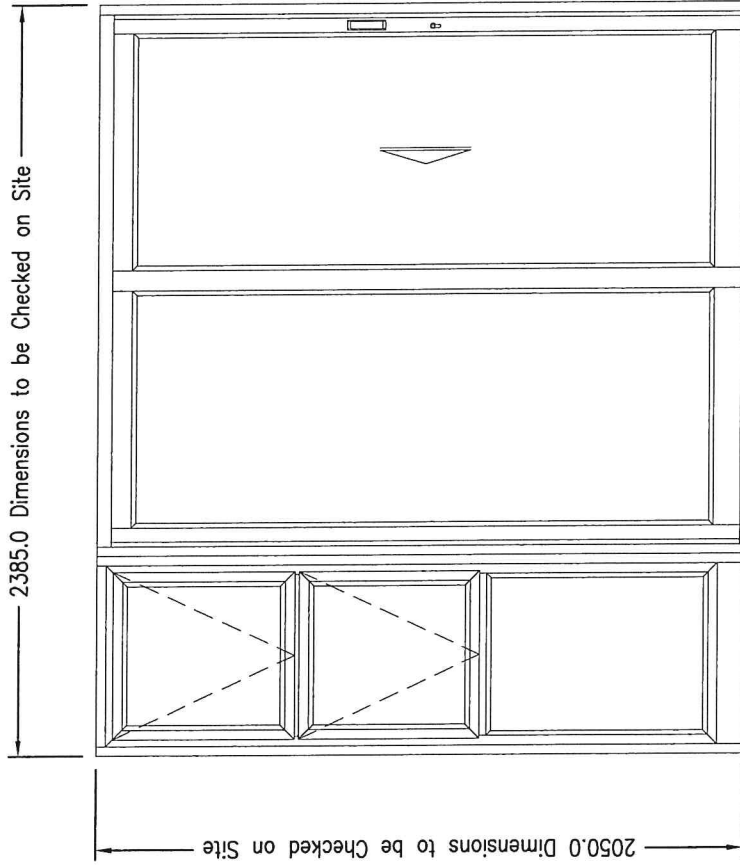
CLEANING AND MAINTENANCE INSTRUCTIONS FOR POWDER COATED ALUMINIUM

To ensure the longevity and hassle-free operation of Wispeco's systems, the following cleaning and maintenance procedures must be strictly adhered to.

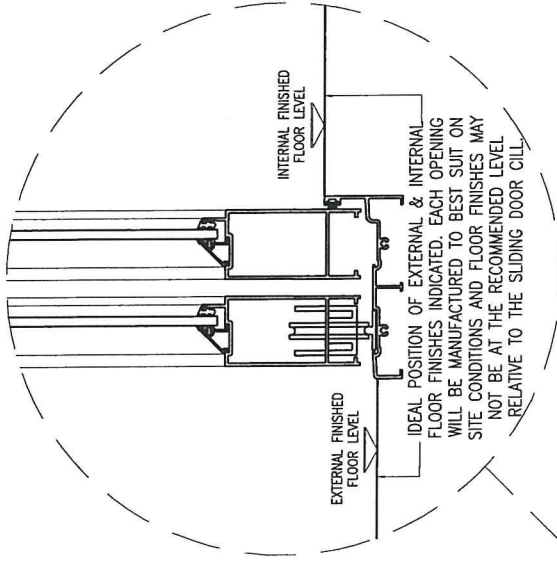
Use a mild cleaner such as Sunlight Liquid with lukewarm water. To prevent marking and scratches, make sure cleaning sponges and cloths are grit free.

Over cleaning or excessive rubbing can do more harm than good. Strong solvents or strong cleaner concentrations can cause damage to painted surfaces. Avoid abrasive cleaners. Do not use household cleaners that contain abrasives on painted surfaces. Abrasive materials such as steel wool, abrasive brushes, etc., can wear and harm finish. Avoid drips and splashes. Remove run downs as quickly as possible. Avoid temperature extremes. Heat accelerates chemical reactions and may evaporate water from solution. Extremely low temperatures may give poor cleaning effects. Cleaning under adverse conditions may result in streaking or staining. Ideally, cleaning should be done in shade at moderate temperature.

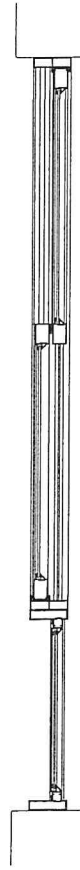
Kind Regards
Mervin Sewpersadh



REFERENCE ELEVATION



REFERENCE SECTION



REFERENCE PLAN

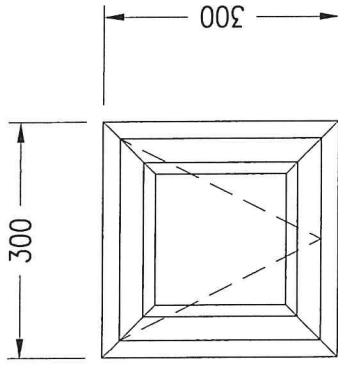
VIEWED FROM OUTSIDE
GLAZED OUT

- System: Crealco Palace OX Heavy Duty Sliding Door with Casement 30.5 top hung sash sidelight
- Finish: Bronze Powder Coated
- Glass: 5mm thick Clear Toughened Safety Glass
- Hardware: Heavy Duty Nylon Rollers, Bronze Powder Coated Flush Pull Handles, 35mm Backset hook lock with Euro Double cylinder

19 Salford Street
Preston, Lancashire
PR1 7JL
Tel: 0550 111 771

Drawing Title
Westwood Estate
 Details
Living Room Replacement Sliding Door


Revision 1
 A4 Scale NIS



REFERENCE ELEVATION
WINDOW TYPE 1

VIEWED FROM OUTSIDE
GLAZED OUT

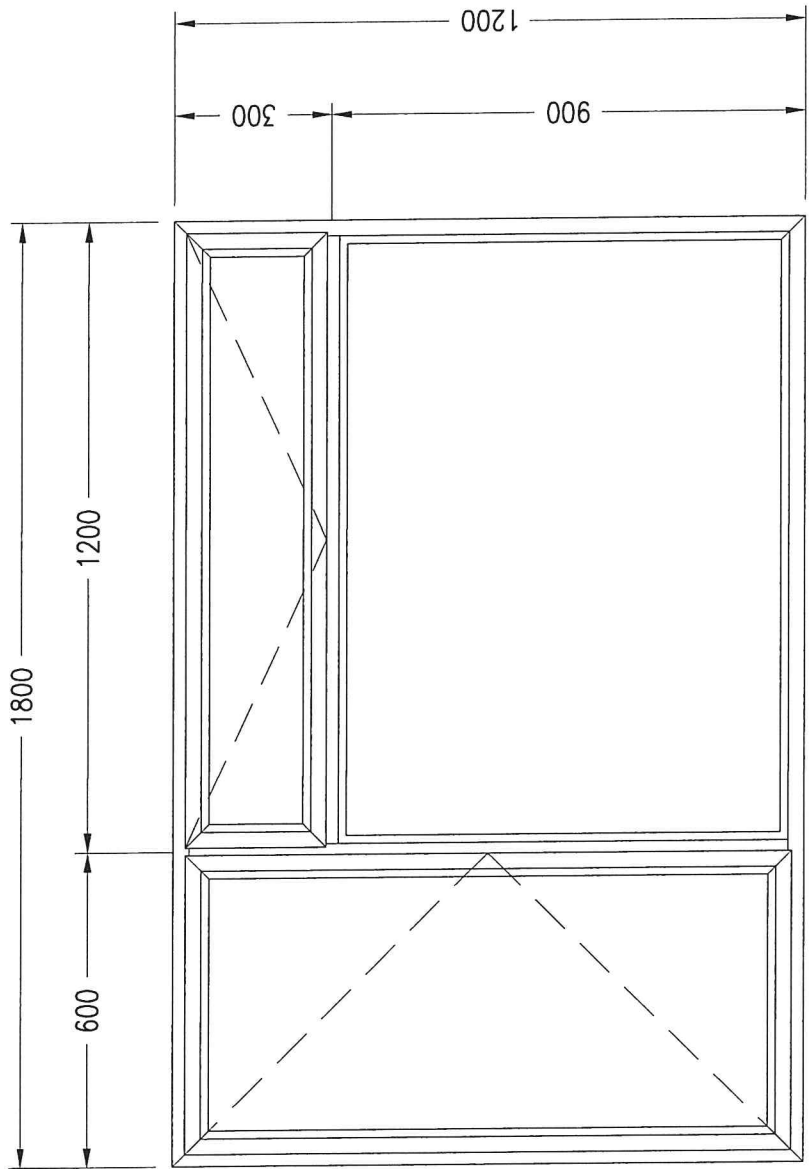
- System: Casement 30.5 top hung sash.
- Finish: Bronze Powder Coated
- Glass: 4mm thick Clear Float Glass, Obscure in Bathrooms.
- Stainless Steel Friction Stays.
- All to be manufactured in accordance with on site measurements.



19 Sullivan Street
Pretoria, Kwazulu Natal
011 453 3241/3242/3243
Tel: 0861 11177

Drawing Title
Westwood Estate
Details
Window Details - Type 1

Revision 1
A4 Scale NTS



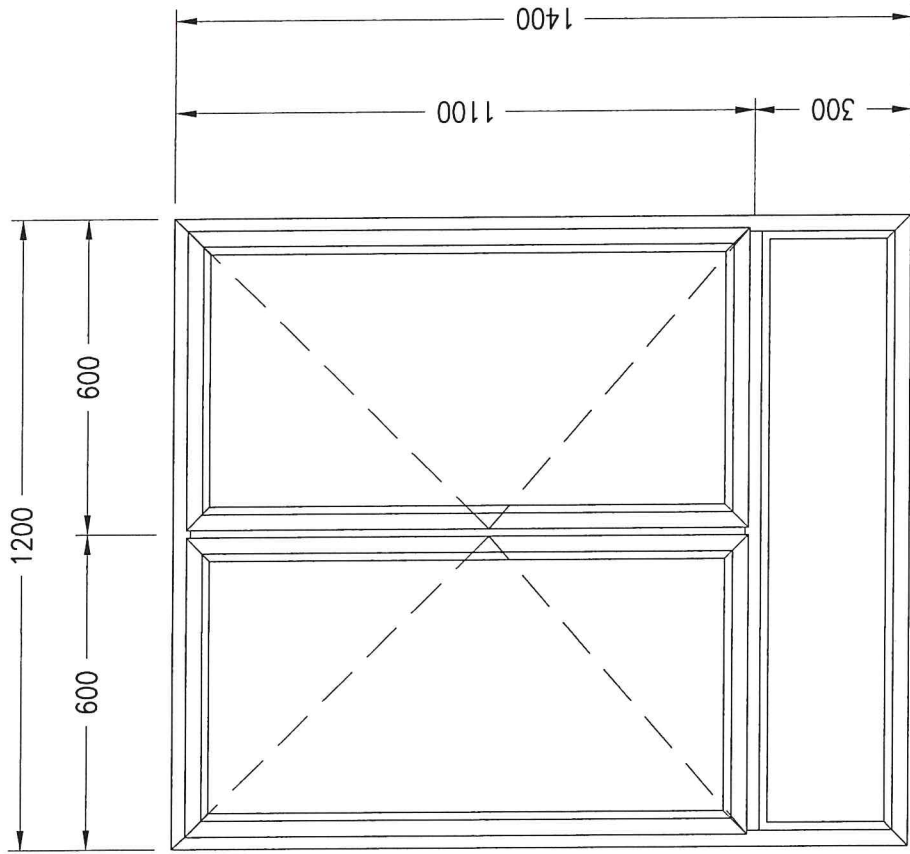
REFERENCE ELEVATION
WINDOW TYPE 2

VIEWED FROM OUTSIDE
GLAZED OUT

- System: Casement, 30.5 top hung and side hung sashes.
- Finish: Bronze Powder Coated
- Glass: 4mm thick Clear Float Glass, Obscure in Bathrooms.
- Stainless Steel Friction Stays.
- All to be manufactured in accordance with on site measurements.

19 Saffron Street
Pretoria, KwaZulu Natal
enke@44architecture.co.za
Tel: 08201 11177

Drawing Title
Westwood Estate
Details
Window Details - Type 2
Revision 1
A4 Scale NTS



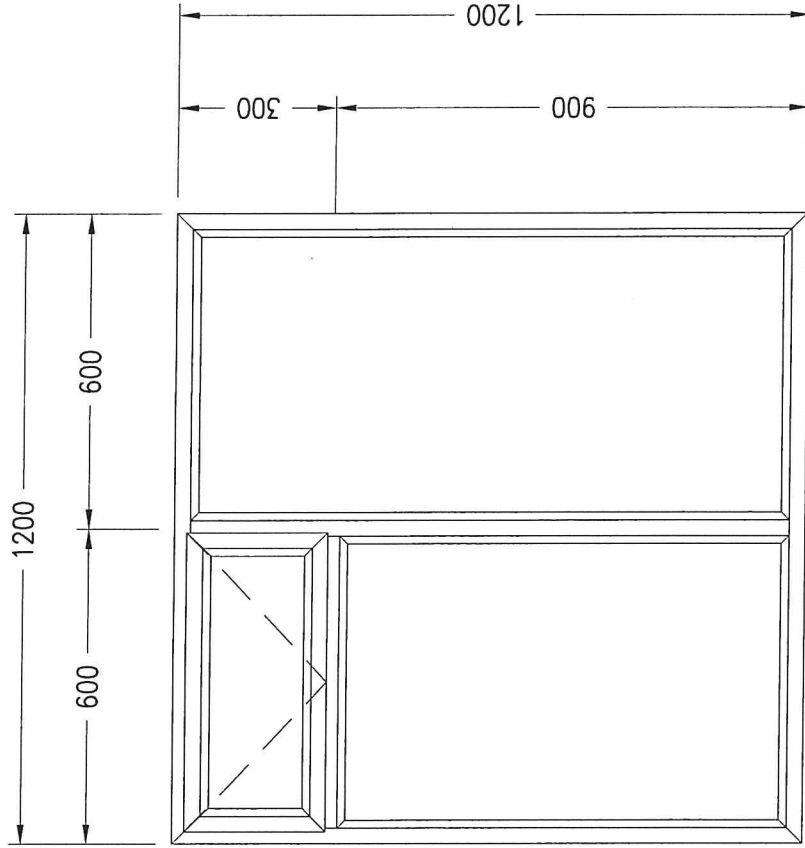
REFERENCE ELEVATION
WINDOW TYPE 3

VIEWED FROM OUTSIDE
GLAZED OUT

- System: Casement 30.5 side hung sashes.
- Finish: Bronze Powder Coated
- Glass: 4mm thick Clear Float Glass, Obscure in Bathrooms.
- Stainless Steel Friction Slays.
- All to be manufactured in accordance with on site measurements.

PROJECTIONS
19 Salford Street
Pretoria, KwaZulu-Natal
email: info@projections.co.za
Tel: 08601 11177

Drawing Title
Westwood Estate
Details
Window Details - Type 3
Revision #
A4 Scale NTS



REFERENCE ELEVATION
WINDOW TYPE 4

VIEWED FROM OUTSIDE
GLAZED OUT

- System: Casement 30.5 top hung sash.
- Finish: Bronze Powder Coated
- Glass: 4mm thick Clear Float Glass, Obscure in Bathrooms.
- Stainless Steel Friction Stays.
- All to be manufactured in accordance with on site measurements.

19 Salford Street
Fribourg, Neuchâtel
VD 2000, Switzerland
Tel: 0521 117172

Drawing Title
Westwood Estate
Details
Window Details - Type 4
Revision 1
A4 Scale NTS