

Repaint of Estate Exterior 2021/2022 Product Spec

<u>Area applied to</u>	<u>Paint Product</u>	<u>Paint Code</u>	<u>Color</u>
Main Wall external and internal	Dulux	15YY57/150	Sandcastle Fall
Main Wall external and internal	Dulux	10YY44/215	Naturally Calm
Ripple Plaster Wall- Dark Accent Color	Dulux	90YR 16/129	Light Chocolate
Ripple Plaster Wall- Dark Accent Color	Dulux	50YR15/377	Van Dyks Red
Woodcare exterior WATERBASED PEARLGLO.	Dulux	30YY 05/044	The Dark Side
Bottom boarder of Bin Yards	Dulux-Roofguard product	Standard color	Wild Plum
Ceilings	Dulux	Matt65	White

Method and application

Metal surfaces

Prep of substrate Balustrade/ metal
 Galvanized Primer
 Universal undercoat
 Topcoat - high gloss enamel Mines grey

Apply end product

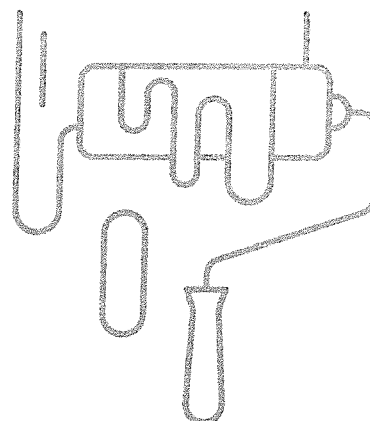
Quick Drying Enamel Paint
 Color is PWD Brown
 Apply one coat anticorrosive metal primer followed by 2 coats of PWD (QD-Quick Drying) brown.

All Walls - Prep and products

Allkali plaster primer Apply 1 coat
 Universal undercoat - Apply 1 coat
 Dulux Dampseal (Where applicable) Apply 1 Coat
 Dulux Rainshield (Flat surface) - Apply 3 coats
 Apply 2 coats of topcoat color

Timber Surfaces

Primer: One Coat Dulux Trade Universal Undercoat.
 Topcoat: Two Coats Dulux Waterbased Pearlgló.
 Method: Use Mohair Roller and Brush To Apply Paint.
 Color: The Dark Side
 Code: 30yy 05/044



Slate Floor Tiling- we do recommend that you invest in treating the floor with an enamel stoep paint. This will give it a new shine and seal the area. This is generally applied in 2 or 3 layers and will reduce the amount of water that soaks in the slab and to the ceiling downstairs. NOTE ALL Plants on balconies are to have a drip tray.

Repaint of Estate Exterior 2021/2022 Product Spec

Primer: One Coat Dulux Trade Universal Undercoat.
 Topcoat: Two Coats Dulux Waterbased Pearl glo.
 Method: Use Mohair Roller and Brush To Apply Paint.
 Color: The Dark Side
 Code: 30yy 05/044

Slate Floor Tiling- we do recommend that you invest in treating the floor with an enamel stoep paint. This will give it a new shine and seal the area. This is generally applied in 2 or 3 layers and will reduce the amount of water that soaks in the slab and to the ceiling downstairs. NOTE ALL Plants on balconies are to have a drip tray.

HAMMERITE® DIRECT TO RUST

Hammerite® Direct to Rust Metal Paint is specially formulated to perform as primer, undercoat and topcoat in one.



HAMMERITE® DIRECT TO RUST UV RESISTANT COLOUR RANGE

HAMMERED FINISH



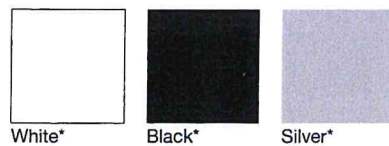
Subtle hammered finish
 Available in 250ml,
 500ml, 1L and 5L.



SMOOTH FINISH



Smooth gloss finish
 Available in 250ml, 1L
 and 5L.



ALSO AVAILABLE IN THE HAMMERITE® RANGE



**Hammerite®
 No.1 Rust Beater**
 Prevents new rust
 from forming,
 primes & undercoats
 in one.



**Hammerite®
 Brush Cleaner & Thinners**
 For use with
 Hammerite Metal Paint.



Westwood Estate Finishes

Kindly note that residents may not alter the EXTERIOR building in any way without written permission from the Directors of the Homeowners Association. This would include (but not limited to) paint colours, windows and doors, screens, balustrading and tiling on the terraces. Residents are to get permission from the Estate Manager for airconditioning installations. Under no circumstances may a resident install a DSTV dish.

The interior of the apartment can be changed to suit the residents taste in terms of paint colour and finishes and the finishes below are a guide should you wish to retain the original specifications.

General Specifications:

Internal Wall Paint Colour: Dulux "Half Egyptian Cotton" available at Shaves.

Internal Door Paint Colour: Dulux "Full Egyptian Cotton" available at Shaves.

All Timber Stain Mix: 0 parts "Woodoc 30 Clear Polywax Sealer" with 1 part "Woodoc Mocha Stain" - Available at Shaves

Specifications for the Various Colour Schemes:

Please note that the floor and wall tiles are very difficult to match exactly as the colour differs from batch to batch. Please check the tiles before you start laying them.

Coraltree (Cognac Cherry kitchen cupboard finish)	
Granite:	Rustenburg
Carpet:	Belgotex Midlands Range: Brushwood (light)
Floor and Wall Tile:	MN043 (Neutral Grey) Available at Tile Africa
Mosaic Shower Tile:	SM830 (DARK GREY) Available at Tile Africa
Ironwood (Wenge [dark wood] kitchen cupboard finish)	
Granite:	Kalahari Sand
Carpet:	Belgotex Midlands Range: Blackwood (dark)
Floor and Wall Tile:	MN043 (Neutral Grey) Available at Tile Africa
Mosaic Shower Tile:	SM830 (DARK GREY) Available at Tile Africa
Paperbark (White Oak kitchen cupboard finish)	
Granite:	Rustenburg
Carpet:	Belgotex Midlands Range: Brushwood (light)
Floor and Wall Tile:	MN041 (CHARCOAL) Available at Tile Africa
Mosaic Shower Tile:	SM 118 (CREAM) Available at Tile Africa
Goldenleaf (Pear [golden brown] kitchen cupboard finish)	
Granite:	Kalahari Sand
Carpet:	Belgotex Midlands Range: Blackwood (dark)
Floor and Wall Tile:	MN042 (BROWN) Available at Tile Africa
Mosaic Shower Tile:	SM 118 (CREAM) Available at Tile Africa